

# PTR3200 Thermostat Instructions (Part I)

Ver.1.1

## Buttons and LCD display

Button / Icon	Description	Button / Icon	Description
	Turning on/off thermostat Program button	AUTO	Auto mode
	Auto/Vacation mode selection Menu button		Vacation mode
	Set the time and week days Confirm settings		Temporary temperature override
	Increase the set value		Frost protection activated
	Decrease the set value		Programmes number
	The buttons are locked.		Heating is turned on

## Menu Settings

Press button to Turn on/off the thermostat. When thermostat is turned off, the LCD will only display "OFF". Now press and hold button for 3 seconds to bring up a configuration menu. In this mode, press button to cycle through the menus.

Menu #	Features description	Features Explanation	Adjustment (press up or down button to adjust)
01	Sensor selection	This thermostat is a combination model allowing you to choose between 3 different models. A, AF and F model. A model: air only, with built in sensor AF model: air & floor, with both built in and remote sensor F model: floor only, with remote sensor	A, AF, F
02	Switching differential	The numbers of degree difference before switching. The default is 1°C which means the thermostat will switch the heating on 0.5°C below the set temperature and will turn it off 0.5°C above the set temperature. With a 2°C differential, the heating will switch on 1°C below the set temperature and will switch off 1°C above the set temperature.	1 °C(default), 2 °C.....10°C
03	Air temperature calibrate	This is to calibrate air temperature if required.	-1°C = decrease 1°C, 1°C = increase 1°C...
04	Floor temperature calibrate	This is to calibrate floor temperature if required.	-1°C = decrease 1 °C, 1°C = increase 1 °C...
05	Program time delay	This gives more time for user to set the programmes before reverting back to standard display	5s , 10s , 15s , 20s (default) , 25s, 30s.
06	Temperature readout (AF model only )	This gives option to choose to show air temperature, floor temperature or to show both floor & air in interval.	A= to show air temperature, F=to show floor temperature, A--F = to show both in 5 second intervals
07	Maximum floor temperature (AF model only)	This is to protect the floor surface.	40°C(default)
08	Backlight turning-on time	This is to set the backlight turning-on time. User can also set the backlight always on or off.	30 seconds(default) On= always on, OFF= always off
09	Temperature format	This allows users to select between °C or °F.	°C or °F
10	Clock format	12/24 Hour clock format selection	24H (default), 12H
11	Frost protection	This is to avoid room temperature goes below 5°C	on= activated, off= deactivated

Remarks: The thermostat will return to standby mode after 20 seconds of inactivity. (Using button will also exit the menu setting)

	<p>Please Note: one of the following error messages will appear if one of these problems occur:</p> <p>E0, meaning the internal sensor is broken, short-circuit or not working properly.</p> <p>E1, meaning the floor sensor is broken, short-circuit, not connected, or not working properly.</p>
	This product should be installed by a qualified electrician.

See overleaf for further setting up information



## Auto Mode

Press button **(M)** to select Auto mode. In Auto mode, the LCD will display "AUTO" on the top left corner. The thermostat executes the preprogrammed schedules in Auto mode. To adjust these schedules, follow the easy steps below.

## Program your thermostat

- 1 Press and hold button **(P)** for 5 seconds until you see a day flashing. Use up or down button adjust the day (hold up or down button for 5 seconds to set all days).
- 2 Press button **(P)** to bring up the program 1 (**(1)**). Use up or down button to set the start time (default 07:00). (Hold up or down button to change by 15 minutes each time.)
- 3 Press button **(P)** again and use up or down button to set the desired temperature to be maintained for program 1. (default 22 °C)
- 4 Press button **(P)** to bring up the program 2 (**(2)**). Use up or down button to set the start time (default 09:30). (Hold up or down button to change by 15 minutes each time.)
- 5 Press button **(P)** again and use up or down button to set the desired temperature to be maintained for program 2. (default 16 °C)
- 6 Press button **(P)** to bring up the program 3 (**(3)**). Use up or down button to set the start time (default 16:30). (Hold up or down button to change by 15 minutes each time.)
- 7 Press button **(P)** again and use up or down button to set the desired temperature to be maintained for program 3. (default 22 °C)
- 8 Press button **(P)** to bring up the program 4 (**(4)**). Use up or down button to set the start time (default 22:30). (Hold up or down button to change by 15 minutes each time.)
- 9 Press button **(P)** again and use up or down button to set the desired temperature to be maintained for program 4. (default 16 °C)
- 10 Press button **(P)** to accept and exit.

Note: It is faster to program the same schedule for the entire week and then to adjust the exceptional days.

- ▷ To erase program 2 and 3 for Saturday and Sunday, see below,
  - In step 1, select Saturday or Sunday.
  - In step 4, instead of using up or down button, using button **(X)** will erase the time. (---).
  - In step 6, instead of using up or down button, using button **(X)** will erase the time. (---).

## Set the Time and Day

This thermostat is fitted with a real time clock. It is essential that the clock time and day are set accurately if you require your programmed events to start on time. Follow the below easy steps.

- Step 1. Press the button **(X)** once and the time will flash
- Step 2. Use up or down button to change the time (Hold up or down button to change by 15 minutes each time.)
- Step 3. Press button **(X)** again, the day of the week will flash
- Step 4. Use up or down button to change the day of the week
- Step 5. Press button **(X)** again to accept and exit

## Resetting factory defaults

Your thermostat has the ability to reset all settings to the factory defaults. If you are certain you want to do this: In standby mode (when thermostat is turned off), press and hold button **(M)** and **(X)** for 5 seconds until "RES" is shown for 5 seconds on LCD.

## Lock the buttons

To lock the buttons, press and hold the up and down buttons for 3 seconds until you see a lock icon appearing, to unlock, repeat the steps above.

## View floor temperature

If thermostat is set in AF model, and set to show air temperature only, press and hold the down button for 3 seconds, floor temperature will show and it will automatically revert back to air temperature in 5 seconds.

## Temporary temperature override

In Auto mode, to temporarily override the current set temperature,

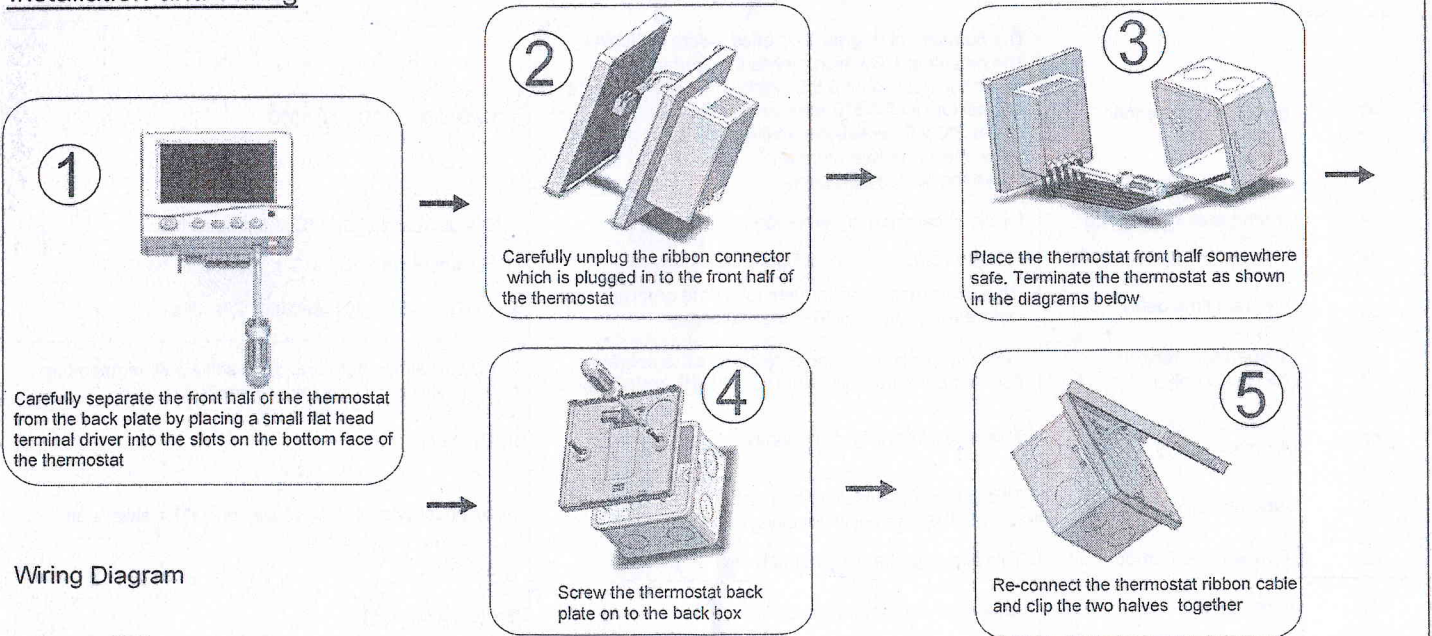
1. Press up or down button once, the set temperature starts flashing
2. Press up or down button again to adjust the set temperature
3. Press **(X)** or wait for 5 seconds to confirm the setting with "Temporary" shown on LCD

Now your thermostat will maintain the new set temperature until the next program. To cancel the override setting, press and hold button **(X)** for 5 seconds until "Temporary" disappears.

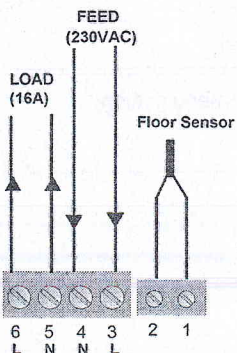
## Vacation mode

press button **(M)** to select vacation mode **(V)**. Vacation mode will maintain a set temperature (default 10°C) all the time. Press up or down button to change the set point and press **(X)** to accept and exit.

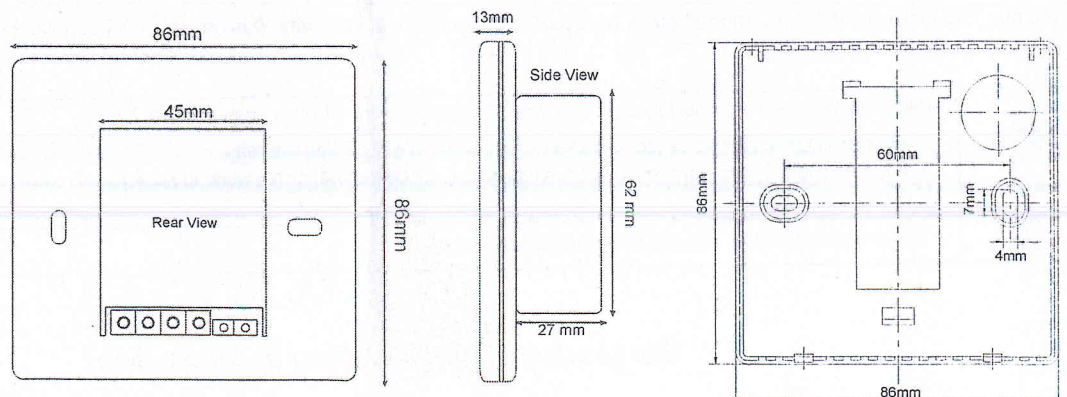
## Installation and Wiring



## Wiring Diagram



## Dimensions



This product should be installed by a qualified electrician.